

更に上のクオリティ  
更に上のサービス!

問題集

**ITEXAMPASS**

<https://www.itexampass.jp>



1年で無料進級することに提供する

**Exam** : **640-875**

**Title** : Building Cisco Service  
Provider Next-Generation  
Networks, Part 1

**Version** : DEMO

1.What is the term that refers to a device that has no Customer Equipment directly connected to it in a Service Provider network?

- A. Provider Edge Router
- B. Customer Edge Router
- C. Non-customer Edge Router
- D. Provider Router
- E. Provider Edge Provider Router

**Answer: D**

2.DRAG DROP

Drag the protocols from the left and drop them on the correct descriptions on the right.

SSH	identified by an EtherType of 0x0800
IPv4	identified by an EtherType of 0x0806
ICMP	identified by an EtherType of 0x86DD
Telnet	identified by IP protocol number 1
UDP	identified by IP protocol number 6
ARP	identified by IP protocol number 17
TCP	identified by TCP port 22
IPv6	identified by TCP port 23

**Answer:**

Drag the protocols from the left and drop them on the correct descriptions on the right.

SSH	IPv4
IPv4	ARP
ICMP	IPv6
Telnet	ICMP
UDP	TCP
ARP	UDP
TCP	SSH
IPv6	Telnet

### 3.DRAG DROP

Drag the protocols from the left and drop them on the Internet Protocol Suite layers where the protocol belongs on the right.  
Not all the layers on the right are used.

ICMP	application layer
TCP	presentation layer
CDP	session layer
DNS	transport layer
	internet layer
	link layer
	physical layer

Answer:

Drag the protocols from the left and drop them on the Internet Protocol Suite layers where the protocol belongs on the right. Not all the layers on the right are used.

ICMP	DNS
TCP	presentation layer
CDP	session layer
DNS	TCP
	ICMP
	CDP
	physical layer

#### 4.DRAG DROP

Drag the descriptions from the left to the correct layers of the hierarchical network model design on the right.

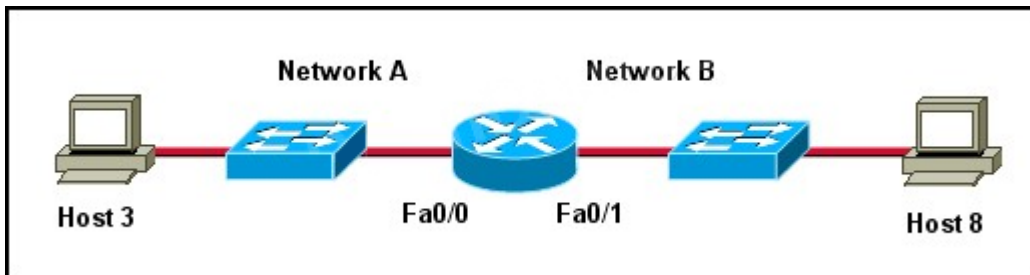
where end-user devices connect into the network	Access Layer
provides high-speed connectivity with low latency and offers a limited set of services and is designed to be highly available	Target
provides policy-based network connectivity	Target
most feature-rich layer and provides security services such as port security	Distribution Layer
	Target
	Core Layer
	Target

**Answer:**

Drag the descriptions from the left to the correct layers of the hierarchical network model design on the right.

where end-user devices connect into the network	<b>Access Layer</b> where end-user devices connect into the network most feature-rich layer and provides security services such as port security
provides high-speed connectivity with low latency and offers a limited set of services and is designed to be highly available	<b>Distribution Layer</b> provides policy-based network connectivity
provides policy-based network connectivity	<b>Core Layer</b> provides high-speed connectivity with low latency and offers a limited set of services and is designed to be highly available
most feature-rich layer and provides security services such as port security	

5.Refer to the exhibit.



Host 3 on Network A is sending data to Host 8 on Network B.

Which address is the default gateway of Host 3?

- A. The address of the switch interface that is connected to router interface Fa0/0
- B. The address of the switch interface that is connected to router interface Fa0/1
- C. The address of the host that is connected to Network A
- D. The address of the host that is connected to Network B
- E. The address of the router interface Fa0/0
- F. The address of the router interface Fa0/1

**Answer: E**