

更に上のクオリティ  
更に上のサービス!

問題集

**ITEXAMPASS**

<https://www.itexampass.jp>



1年で無料進級することに提供する

**Exam** : **70-385**

**Title** : Recertification for MCSE:  
Messaging

**Version** : DEMO

## 1.Topic 1, Fabrikam, Inc

### Overview

Fabrikam, Inc., is a pharmaceutical company located in Europe. The company has 5,000 users. The company is finalizing plans to deploy an Exchange Server 2013 organization.

The company has offices in Paris and Amsterdam.

### Existing Environment

#### Active Directory Environment

The network contains an Active Directory domain named fabrikam.com. An Active Directory site exists for each office.

#### Network Infrastructure

The roles and location of each server are configured as shown in the following table.

| Server name | Role   | Location                                 |
|-------------|--|--|
| DC1         | Domain controller<br>Global catalog server                     | Paris office                             |
| DC2         | Domain controller  | Paris office                             |
| DC3         | Schema master<br>Domain controller<br>Global catalog server    | Amsterdam office                         |
| FS1         | File server  | Paris office                             |
| FS2         | File server  | Paris office                             |
| FS3         | File server  | Amsterdam office                         |
| FS4         | File server  | Amsterdam office                         |
| TMG1        | Microsoft Forefront<br>Threat Management<br>Gateway (TMG) 2010 | Perimeter network<br>in the Paris office |

Client computers run either Windows 7 or Windows 8 and have Microsoft Office 2010 installed. The Paris office uses the 192.168.1.0/24 IP range. The Amsterdam office uses the 192.168.2.0/24 IP range. The offices connect to each other by using a high-speed, low-latency WAN link. Each office has a 10-Mbps connection to the Internet.

#### Planned Exchange Infrastructure

The company plans to deploy five servers that run Exchange Server.

The servers will be configured as shown in the following table.

| <b>Server name</b> | <b>Server role</b>  | <b>Location</b>                       |
|--------------------|---|---------------------------------------|
| EX1                | <ul style="list-style-type: none"><li>• Exchange Server 2013 Mailbox server</li><li>• Exchange Server 2013 Client Access server</li></ul> | Paris office                          |
| EX2                | <ul style="list-style-type: none"><li>• Exchange Server 2013 Mailbox server</li><li>• Exchange Server 2013 Client Access server</li></ul> | Paris office                          |
| EX3                | <ul style="list-style-type: none"><li>• Exchange Server 2013 Mailbox server</li><li>• Exchange Server 2013 Client Access server</li></ul> | Amsterdam office                      |
| EX4                | <ul style="list-style-type: none"><li>• Exchange Server 2013 Mailbox server</li><li>• Exchange Server 2013 Client Access server</li></ul> | Amsterdam office                      |
| EDGE1              | Exchange Server 2010 Edge Transport server  | Perimeter network in the Paris office |

The company plans to have mailbox databases replicated in database availability groups (DAGs). The mailbox databases and DAGs will be configured as shown in the following table.

| DAG name | Database name                        | DAG member |
|----------|--------------------------------------|------------|
| DAG1     | OperationsDB<br>FinanceDB<br>SalesDB | EX1, EX3   |
| DAG2     | MarketingDB<br>ResearchDB<br>LabDB   | EX2, EX4   |

DAG1 will use FS1 as a file share witness. DAG2 will use FS3 as a file share witness.

You plan to create the following networks on each DAG:

- A dedicated replication network named DAGNET1
- A MAPI network named DAGNET2

All replication traffic will run on DAGNET1. All client connections will run on DAGNET2. Client connections must never occur on DAGNET1. Replication traffic must only occur on DAGNET2 if DAGNET1 is unavailable.

Each Exchange Server 2013 Mailbox server will be configured to have two network adapters.

The following two mailbox databases will not be replicated as part of the DAGs:

- A mailbox database named AccountingDB that is hosted on EX1
- A mailbox database named TempStaffDB that is hosted on EX4

EDGE1 will have an Edge Subscription configured, with both EX1 and EX2 as targets.

## Requirements

### Planned Changes

An external consultant reviews the Exchange Server 2013 deployment plan and identifies the following areas of concern:

- The DAGs will not be monitored.
- Multiple Edge Transport servers are required to prevent the potential for a single point of failure.

### Technical Requirements

Fabrikam must meet the following technical requirements:

- Email must be evaluated for SPAM before the email enters the internal network.
- Production system patching must minimize downtime to achieve the highest possible service to users.
- Users must be able to use the Exchange Control Panel to autonomously join and disjoin their department's distribution lists.
- Users must be able to access all Internet-facing Exchange Server services by using the names of mail.fabrikam.com and autodiscover.fabrikam.com.

The company establishes a partnership with another company named A. Datum Corporation. A. Datum uses the SMTP suffix adatum.com for all email addresses. Fabrikam plans to exchange sensitive information with A. Datum and requires that the email messages sent between the two companies be encrypted. The solution must use Domain Security.

Users in the research and development (R&D) department must be able to view only the mailboxes of the users in their department from Microsoft Outlook. The users in all of the other departments must be prevented from viewing the mailboxes of the R&D users from Outlook.

Administrators plan to produce HTML reports that contain information about recent status changes to the

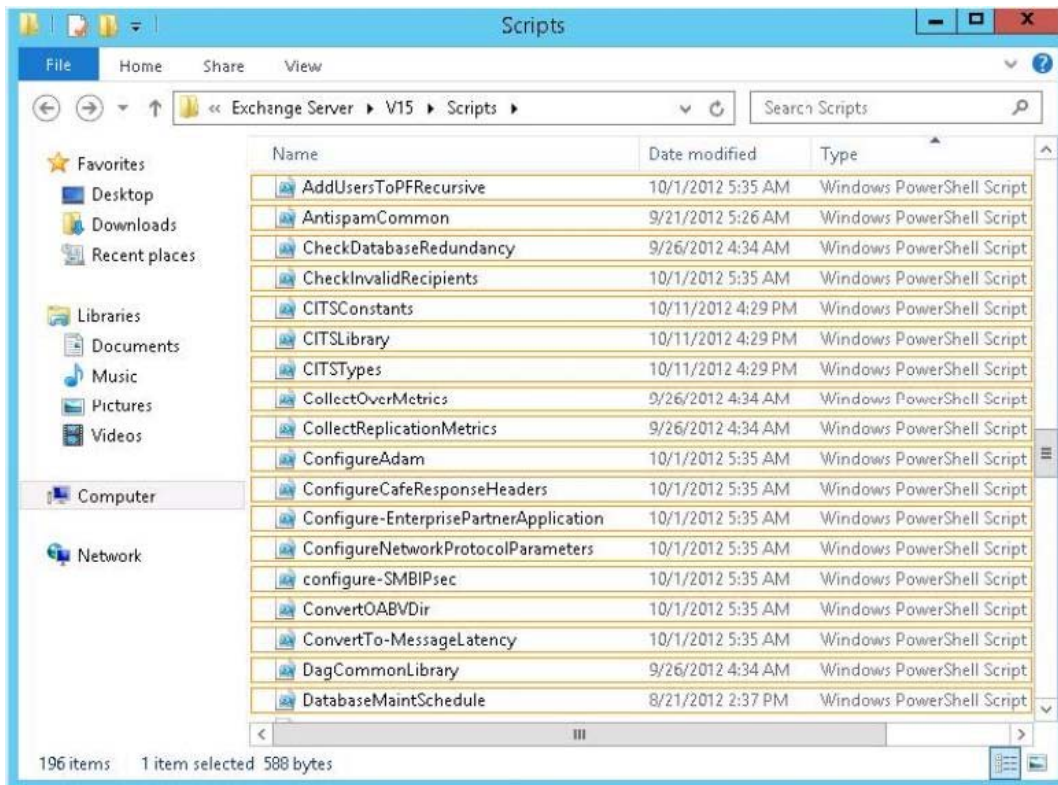
mailbox databases.

Fabrikam is evaluating whether to abort its plan to implement an Exchange Server 2010 Edge Transport server and to implement a Client Access server in the Paris office instead. The Client Access server will have anti-spam agents installed.

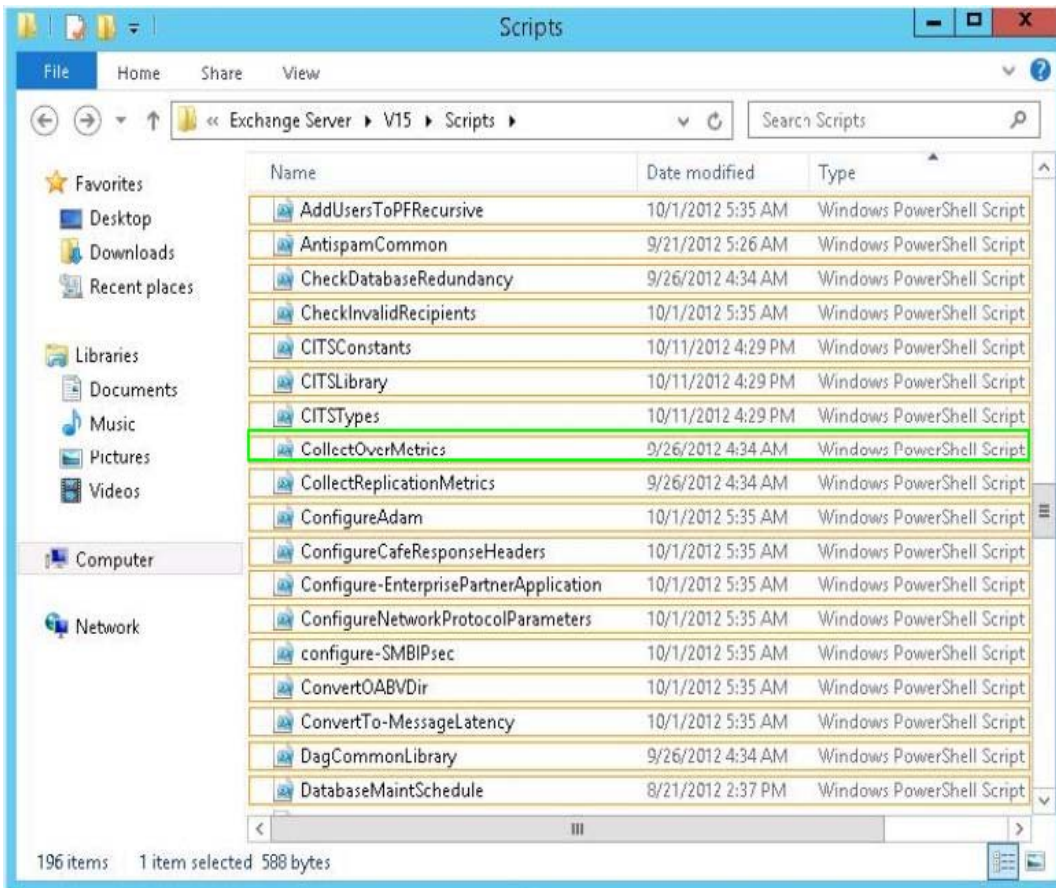
### HOTSPOT

You need to recommend which script the administrators must run to create the reports required to meet the technical requirements.

Which script should you recommend? To answer, select the appropriate script in the answer area.



**Answer:**



2.You need to recommend which type of group must be used to create the planned department lists. Which type of group should you recommend?

- A. Universal Distribution
- B. Dynamic Distribution
- C. Global Security
- D. Universal Security

**Answer: A**

3.You need to recommend which task is required to prepare Active Directory for the planned Exchange Server 2013 implementation.

What should you recommend?

- A. On any domain controller in the Paris office, run setup.exe /preparead.
- B. On any domain controller in the Amsterdam office, run setup.exe /preparead.
- C. On any domain controller in the Paris office, run setup.exe /preparealldomains.
- D. On any domain controller in the Amsterdam office, run setup.exe /preparedomain.

**Answer: B**

4.You are testing the planned implementation of Domain Security. You discover that users fail to exchange domain-secured email messages.

You open the Exchange Management Shell and discover the output shown in the exhibit. (Click the Exhibit button.)

```

Machine: ex2.contoso.com
[PS] C:\Windows\system32>Get-SendConnector adatum | fl
AddressSpaces           : <smtp:adatum.com;1>
AuthenticationCredential :
CloudServicesMailEnabled : False
Comment                 :
ConnectedDomains        : <>
ConnectionInactivityTimeout : 00:10:00
DNSRoutingEnabled       : True
DomainSecureEnabled     : False
Enabled                  : True
ErrorPolicies           : Default
ForceHELO                : False
Fqdn                    : EX1.Fabrikam.com
FrontendProxyEnabled    : False
HomeMTA                  : Microsoft MTA
HomeMtaServerId         :
Identity                 : adatum
IgnoreSTARTTLS          : False
IsScopedConnector       : False
IsSmtplibConnector      : True
MaxMessageSize          : Unlimited
Name                     : adatum
Port                     : 25
ProtocolLoggingLevel    : None
RequireOrg               : False
RequireTLS               : False
SmartHostAuthMechanism  : None
SmartHosts               : <>
SmartHostsString        :
SmtplibMaxMessagesPerConnection : 20
SourceIPAddress         : 0.0.0.0
SourceRoutingGroup      : Exchange Routing Group (DWBGZMFD01QNBJR)
SourceTransportServers  : <EX1>
TlsAuthLevel            :
TlsCertificateName      :
TlsDomain                :
UseExternalDNSServersEnabled : False

```

You need to ensure that users can exchange email messages by using Domain Security.

Which two parameters should you modify by using the Set-SendConnector cmdlet? (Each correct answer presents part of the solution. Choose two.)

- A. tlsauthlevel
- B. requiretls
- C. ignorestarttls
- D. tlsdomain
- E. domainsecureenabled
- F. smarthostauthmechanism

**Answer:** B,E

5. You need to recommend which recovery solution will restore access to all of the mailboxes in AccountingDB if EX1 fails. The solution must restore access to email messages as quickly as possible. Which recovery solution should you recommend?

- A. On EX2, create a new mailbox database. Restore the database files, and then mount the database. Run the New-MailboxRestoreRequest cmdlet for all of the mailboxes in the database.
- B. On EX2, create a new mailbox database. Restore the database files, and then mount the database. Run the Set-Mailbox cmdlet for all of the mailboxes in the database.
- C. On replacement hardware, run setup /mode:recoverserver. Restore the database files, and then mount the database. Run the Set-Mailbox cmdlet.
- D. On replacement hardware, run setup /mode:recoverserver. Restore the database files, and then mount the database. Run the New-MailboxRestoreRequest cmdlet for all of the mailboxes in the database.

**Answer:** A