

更に上のクオリティ  
更に上のサービス!

問題集

**ITEXAMPASS**

<https://www.itexampass.jp>



1年で無料進級することに提供する

**Exam** : **74-409**

**Title** : Server Virtualization with  
Windows Server Hyper-V  
and System Center

**Version** : DEMO

1.You administer a Windows Server 2012 R2 server that has the Hyper-V role installed. You deploy a new virtual machine. You add two virtual network adapters to the virtual machine. You need to ensure that the virtual machine maintains network connectivity if one virtual network adapter fails.

What should you do?

- A. Run the Windows PowerShell cmdlet Enable-VMReplication.
- B. Enable Dynamic Host Configuration Protocol (DHCP) Guard.
- C. Run the Windows PowerShell cmdlet Set-VMHost.
- D. Run the Windows PowerShell cmdlet Set-VMNetworkAdapter.

**Answer: D**

2.You administer a server that runs Windows Server 2012 R2 that has the Hyper-V role installed. You plan to apply an update to a virtual machine (VM).

You have the following requirements:

- You must be able to quickly revert back to a pre-update state.
- The solution must minimize storage requirements on the server.

You need to apply the update. What should you do?

- A. Run the Windows PowerShell cmdlet New-VirtualDiskClone.
- B. Create a checkpoint of the VM.
- C. Run the Windows PowerShell cmdlet Export-VMSnapshot.
- D. Export the VM.

**Answer: B**

3.A company has Windows Server 2012 R2 servers that have the Hyper-V role installed.

The guest virtual machines are configured as follows:

Configuration	Description
Operating System	Windows Server 2012
Virtual Machine Generation	Generation 1
Operating System Drive Format	.vhdx
Data Drive Format	.vhd

You need to ensure that the environment supports online virtual hard disk resizing.

What should you do?

- A. Convert the virtual machines to Generation 2 virtual machines.
- B. Deploy clustered storage spaces.
- C. Convert the drive format of the virtual machines to the VHDX file format.
- D. Deploy Serial Attached SCSI (SAS).

**Answer: C**

4.A Windows Server 2012 R2 Hyper-V host server has four network adapters that are connected to two different network switches, server contains a virtual machine named NYC-WEB.

You have the following requirements:

- increase the available bandwidth for NYC-WEB
- implement network fault tolerance for NYC-WEB without modifying network switch configurations
- use the least amount of administrative effort

You need to configure the Hyper-V environment. What should you do first?

- A. Enable NIC teaming. Configure the team to use Static Teaming mode.
- B. Enable NIC teaming. Configure the team to use Switch Independent mode.
- C. Enable Bandwidth Management on NYC-WEB.
- D. Run the Windows PowerShell command `Set-NetLbfoTeam -Name Team1 -TeamingMode Static`.

**Answer: B**

#### 5.DRAG DROP

You administer a Windows Server 2012 R2 server that has the Hyper-V role installed.

The host server has the following configuration:

Server	Switch	VLAN ID	Description
VM-SERVER1	VirtualSwitch1	30	Lab Environment
VM-SERVER2	VirtualSwitch2	50	Production Environment

You deploy a new lab virtual machine named VM-SERVER3.

You need to ensure that VM-SERVER3 communicates only with VM-SERVER1.

Which three actions should you perform in sequence? To answer, move the appropriate actions from the list of actions to the answer area and arrange them in the correct order.

On VM-SERVER3, add a virtual network adapter and associate it with VirtualSwitch1.

Run the Windows PowerShell cmdlet **Enable-VMswitchExtension**.

On VM-SERVER3, add a virtual network adapter and associate it with VirtualSwitch2.

Enable virtual LAN (VLAN) identification.

Configure a virtual LAN (VLAN) ID of 50.

Configure a virtual LAN (VLAN) ID of 30.

**Answer:**

Run the Windows PowerShell cmdlet **Enable-VMSwitchExtension**.

On VM-SERVER3, add a virtual network adapter and associate it with VirtualSwitch2.

Configure a virtual LAN (VLAN) ID of 50.

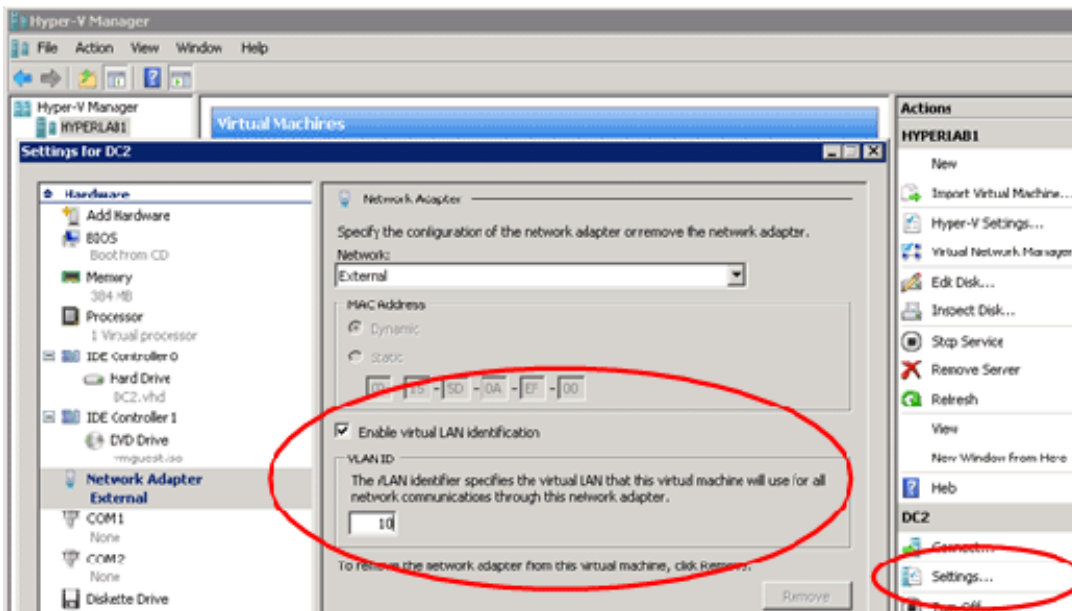
On VM-SERVER3, add a virtual network adapter and associate it with VirtualSwitch1.

Enable virtual LAN (VLAN) identification.

Configure a virtual LAN (VLAN) ID of 30.

### Explanation:

For step 2 and step 3 refer to the diagram below.



Incorrect:

Not Enable-VMSwitchExtension: The Enable-VMSwitchExtension cmdlet enables one or more extensions on one or more switches. You can use the Get-VMSwitchExtension cmdlet to enumerate the virtual switch extensions installed on the system.