

更に上のクオリティ
更に上のサービス!

問題集

ITEXAMPASS

<https://www.itexampass.jp>



1年で無料進級することに提供する

Exam : **QSSA2022**

Title : Qlik Sense System
Administrator Certification
Exam - 2022

Version : DEMO

1.A system administrator is creating a user directory connector (UDC) for an Active Directory using SSL. Which path should the administrator use to configure the UDC?

- A. ldap://example.com
- B. ldap://example.com/secure
- C. https://ldap.example.com
- D. ssl://ldap.example.com

Answer: A

Explanation:

LDAP is a protocol and the way to access it via URL is the same as existing ones such as: http://, ftp:// and etc. In this case you can already take into account that the beginning of the address needs to be "ldap://". There are cases where the protocol is configured as the letter "s" at the end, indicating that SSL support is supported, in this case it would be "ldaps://", which would be correct as well. The same happens in http:// for https://.

There is no "subfolder" in the exclusive address for SSL in LDAP. Not that this is impossible to exist, but it is not common and there is a more appropriate **Answer** to the questioning.

2.The marketing department creates a content library with all company logos and branding images. All business analysts are instructed to use only those images. Business analysts can NOT see these images when they create the apps.

What should the system administrator review first to troubleshoot this issue?

- A. Business analyst's browser proxy configuration
- B. File permissions in Content folder
- C. Security rule for the content library
- D. Custom properties for the virtual proxy

Answer: C

Explanation:

About content accesses for applications, connections, images and etc; it's all under the responsibility of Qlik Sense itself.

If a user does not have access to one of these cited items, it may be some issue related to licensing or access security rules.

As images for applications are inserted into a library within the QMC panel and then you can create various rules of access to users. For this specific question in is as if someone had forgotten to setup permissions.

3.A domain user had access and was able to successfully log into the hub the day before. You use the same user and domain credentials to sign in to today's hub and receive this error message: "Your account is inactive. Contact your administrator to activate it".

The user is able to successfully authenticate to the Windows domain network, proxy and internet browsing. The user has not changed the password recently.

What should the system administrator investigate to determine the cause of the problem and resolve?

- A. Proxy log files on the Qlik Sense server
- B. View Windows operating system events (Event Viewer)
- C. Security rules that may interfere with user authentication
- D. User properties in QMC

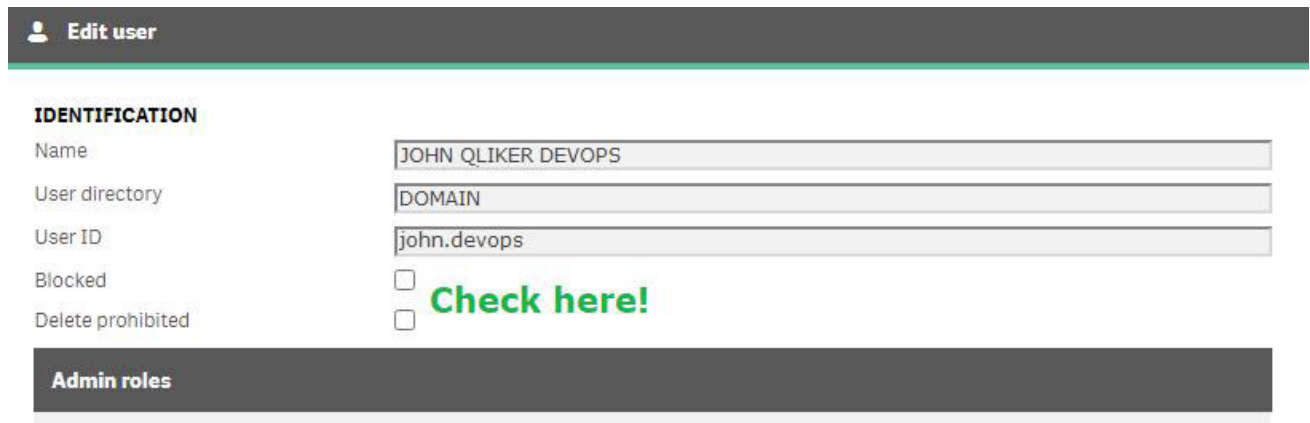
Answer: D

Explanation:

The Qlik Sense message is clear regarding the problem: the user's account is inactive. This type of error does not interfere with how the user is configured or accesses the Windows network.

You must make sure that the user is not blocked/prevented from accessing Qlik Sense Server.

Check the image.



4. Business users report that their Qlik Sense app performs slowly in the afternoon. The system administrator needs to check CPU and RAM utilization during that timeframe. The system administrator has access only to the QMC and the hub.

Which tool should the system administrator use to investigate this issue?

- A. Event Viewer
- B. Task Manager
- C. License Monitor
- D. Operations Monitor

Answer: D

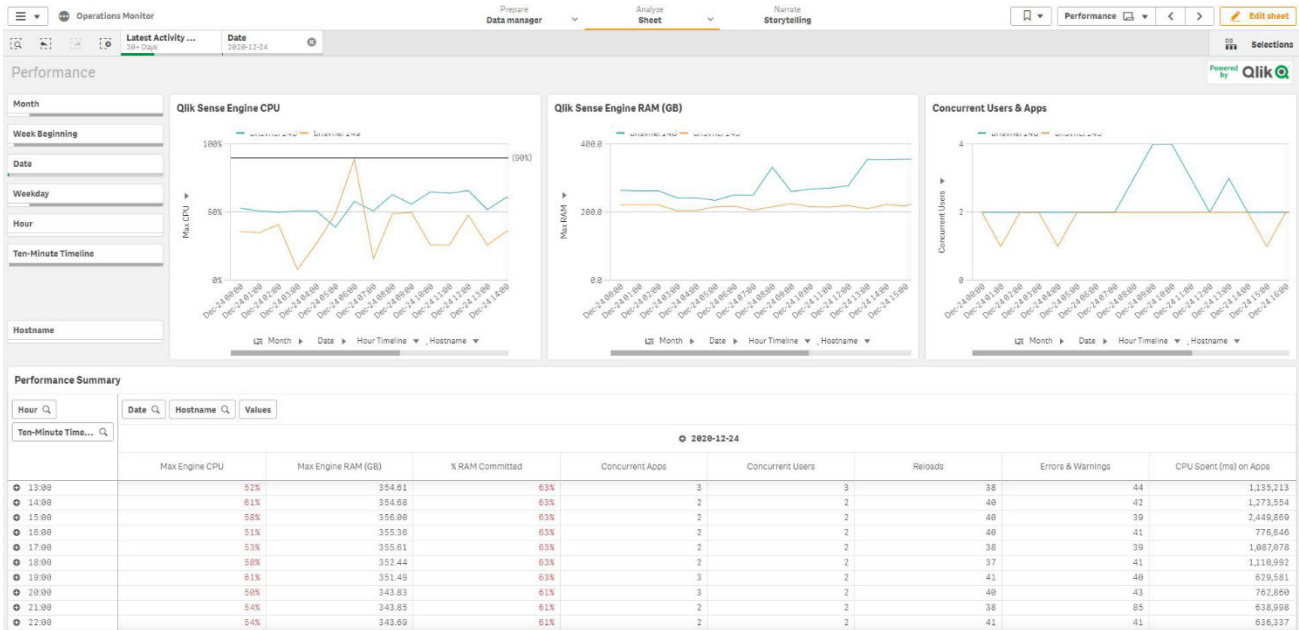
Explanation:

Operations Monitor is an extremely useful application for situations such as those described in the issue. Check the following image to get a track of the information you could get to validate the scenario in auto CPU and RAM usage at a certain time of day.

Operations Monitor:

[https://help.qlik.com/en-US/sense-](https://help.qlik.com/en-US/sense-admin/November2020/Subsystems/DeployAdministerQSE/Content/Sense_DeployAdminister/QSEoW/Administer_QSEoW/Monitoring_QSEoW/Operations-monitor-app.htm)

[admin/November2020/Subsystems/DeployAdministerQSE/Content/Sense_DeployAdminister/QSEoW/Administer_QSEoW/Monitoring_QSEoW/Operations-monitor-app.htm](https://help.qlik.com/en-US/sense-admin/November2020/Subsystems/DeployAdministerQSE/Content/Sense_DeployAdminister/QSEoW/Administer_QSEoW/Monitoring_QSEoW/Operations-monitor-app.htm)



5. The Marketing user who should access a stream of the same name receives a message: "An error occurred. Access is denied".

The rule in the stream is:

((user.group!="Sale" and user.group!="Finance" and user.group!="Accounting"))

What is causing this error?

- A. The Marketing group does not have access permission to the stream and possibly the application
- B. Group rules are excluding the user
- C. The application contains Section Access and the Marketing group is not configured on it
- D. The application contains Section Access and the user is not included in it

Answer: A

Explanation:

This issue can confuse even the most experienced. And I'll explain the reason:

It is very common in Qlik Sense Enterprise environments, especially in the first deployment of the client someone create a Security Rule with parameter Resource filter = "Stream_*" for all users, so that everyone can access the new streams as they are created automatically.

And then, when they create a new stream, this type of rule is automatically inherited, giving the impression that by default access to the stream is guaranteed, which is not true.

For a user to have access to a stream, there must be a rule that gives them access permission.

According to the issue, the stream rule prevents some groups from going into the Stream, but has no other rules that give the permission themselves.

Another point is confusion about Section Access. The clue is about the error message. When the user does not have access due to Section Access the message is only "Access Denied" and not "An error has occurred. Access is denied". There might even be an error there, but there's a security rule situation that needs to be resolved first.